

Capital Improvement Summary for Projects planned in 2011

Although the Capital Improvement Plan (CIP) section of this document lists projects anticipated for the next six years, the following is a summary of the projects planned in 2011. Complete project details are included in Section 9 – Capital Improvement Plan. These projects have been incorporated into the budget and are listed with their appropriated funding sources.



General Purpose Projects

Park & Recreation Building

Funds are being appropriated in 2011 to perform planned maintenance and repairs to the Parks & Recreation Building, the roof and parking lot to improve safety and functionality.

Facilities Fund (331)

Construction	\$ 20,000
Total 2011 Costs	\$ 20,000

Funding Source:

City Reserves

Impact on Operating Budget:

There will be additional impact on future operating budget for the debt payment and increased utility and maintenance expenses. These will be offset in part by rental revenues and increased user fees from park programs.

Public Works Complex Relocation

Funds are being appropriated in 2011 to upgrade the Public Works facilities and relocate Public Works operations to an area where there is less conflict with nearby public uses.

Facilities Fund (331)

Construction	\$ 100,000
Total 2011 Costs	\$ 100,000

Funding Source:

City Reserves

Impact on Operating Budget:

There will be additional impact on future operating budget beginning 2014 for the debt payment and increased operating expenses.



Park Projects

American Legion Park

Funds are being appropriated in 2011 to replace the American Legion Park trail with new asphalt or extend the boardwalk into the park.

Park Reserves Fund (302)

Construction	\$ 20,000
Total 2011 Costs	\$ 20,000

Funding Source:

Park Reserves

Impact on Operating Budget:

Beginning 2011, this project is projected to increase operating expenses by \$500 per year to support ongoing maintenance costs.

Poulsbo’s Fish Park Restoration

Funds are being appropriated in 2011 for the continued restoration efforts of Fish Park. The purchases of the land and master plan design have been expended in prior years.

Park Reserves (Fund 302)

Construction	\$	20,000
Management	\$	<u>5,000</u>
Total 2011 Costs	\$	25,000

Funding Source:

Park Reserves

Impact on Operating Budget:

This park is all natural so there will be limited maintenance impact on future operating budgets.

Liberty Bay Waterfront Trail

Funds are being appropriated in 2011 to develop a one mile continuous trail along the waterfront from Liberty Bay Park to the south city limits of Viking Avenue.

Park Reserves (Fund 302)

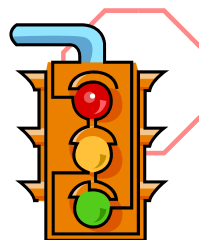
Planning & Design		<u>65,000</u>
Total 2011 Costs	\$	65,000

Funding Source:

Federal Grants, City Reserves & Donations

Impact on Operating Budget:

Beginning 2015, this project is projected to increase operating budgets by \$5,000 annually to support ongoing maintenance costs.



Transportation Projects

Noll Road Improvements

Funds are being appropriated in 2011 for Phase I of the project which includes the construction of pedestrian and bicycle improvements between Poulsbo Middle School and Poulsbo Elementary School.

Street Reserves (Fund 311)

Construction	\$	50,000
Management		<u>50,000</u>
Total 2011 Costs	\$	100,000

Funding Source:

City Street Reserves, City Impact Fees

Impact on Operating Budget:

There will be no additional impact on the 2011 operating budget.

3rd Ave Reconstruction – Moe to Iverson

Funds are being appropriated in 2011 for the construction related to sidewalk, curb, pavement repairs, overlay and striping.

Street Reserves (Fund 311)

Construction	\$	280,000
Management		<u>20,000</u>
Total 2011 Costs	\$	300,000

Funding Source:

City Street Reserves

Impact on Operating Budget:

There will be no additional impact on the 2011 operating budget.

3rd Ave Reconstruction – Moe to Hostmark

Funds are being appropriated in 2011 to begin planning and design related to sidewalk and curb installation, pavement repairs, pavement overlay, parking and striping.

<i>Street Reserves (Fund 311)</i>		
Planning & Design	\$	30,000
Total 2011 Costs	\$	30,000

Funding Source:
City Reserves

Impact on Operating Budget:
There will be no additional impact on the 2011 operating budget.

6th Ave Traffic Safety Improvements

Funds are being appropriated in 2011 for the design and construction of traffic calming devices.

<i>Street Reserves (Fund 311)</i>		
Planning & Design	\$	20,000
Construction		260,000
Management		20,000
Total 2011 Costs	\$	300,000

Funding Source:
State Grants, City Reserves

Impact on Operating Budget:
There will be no additional impact on the 2011 operating budget.

Hostmark Sidewalk/Bike Lane

Funds are being appropriated in 2011 to construct a five foot wide sidewalk and five foot wide bike lane along the south side from SR 305 to Hostmark.

<i>Street Reserves (Fund 311)</i>		
Planning & Design	\$	30,000
Total 2011 Costs	\$	30,000

Funding Source:
City Reserves

Impact on Operating Budget:
There will be no additional impact on the 2011 operating budget.

Liberty Bay Waterfront Trail

Funds are being appropriated in 2011 to construct a pedestrian/bicycle trail from Legion Park to Liberty Bay Auto dealership.

<i>Street Reserves (Fund 311)</i>		
Planning & Design	\$	95,000
Total 2011 Costs	\$	95,000

Funding Source:
Federal Grants, City Reserves

Impact on Operating Budget:
There will be no additional impact on the 2011 operating budget.

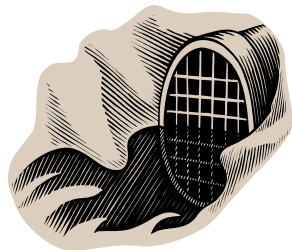
Emergency Fjord Drive Bank Repair

Funds are being appropriated in 2011 to stabilize the bank. The project is combining street, water, sewer and storm drain repairs. This funding represents the street contribution to the Fjord Drive Bank repair project.

<i>Street Reserves (Fund 311)</i>		
Construction	\$	425,000
Management		50,000
Total 2011 Costs	\$	475,000

Funding Source:
Federal Grants

Impact on Operating Budget:
There will be no additional impact on the 2011 operating budget.



**Sewer
Projects**

Annual Inflow Reduction Program

Funds are being appropriated in 2011 to implement an inflow reduction program consisting of identifying and repairing inflow sources.

<i>Sewer Fund (403)</i>	
Construction	\$ 20,000
Total 2011 Costs	\$ 20,000

Funding Source:
Sewer Reserves

Impact on Operating Budget:
There will be no additional impact on the 2011 operating budget.

6th & 9th Avenue Pump Station Upgrade

Funds are being appropriated in 2011 to rehabilitate and upgrade the 6th & 9th Avenue wastewater pump stations and replace the transmission mains.

<i>Sewer Fund (403)</i>	
Construction	\$ 570,000
Construction Management	30,000
Total 2011 Costs	\$ 600,000

Funding Source:
Sewer Reserves

Impact on Operating Budget:
There will be no additional impact on the 2011 operating budget.

Tollefson Forcemain Upgrade

Funds are being appropriated in 2011 to increase capacity of the Tollefson manhole where SR 305 Forecemain discharges sewer into the gravity system.

<i>Sewer Fund (403)</i>	
Design	\$ 10,000
Construction	40,000
Total 2010 Costs	\$ 50,000

Funding Source:
Sewer Reserves

Impact on Operating Budget:
There will be no additional impact on the 2011 operating budget.

Harrison Forcemain Replacement

Funds are being appropriated in 2011 to replace the Forcemain from the Marine Science Center pump and install a new main along Fjord Drive and tie it to the existing main at Harrison Street.

<i>Street Reserves (Fund 311)</i>	
Planning & Design	\$ 40,000
Total 2011 Costs	\$ 40,000

Funding Source:
Sewer Reserves

Impact on Operating Budget:
There will be no additional impact on the 2011 operating budget.

Emergency Fjord Drive Bank Repair

Funds are being appropriated in 2011 to stabilize the bank. The project is combining street, water, sewer and storm drain repairs. This funding represents the sewer utility contribution to the Fjord Drive Bank repair project.

Water Fund (Fund 403)

Construction	\$ 25,000
Management	<u>5,000</u>
Total 2011 Costs	\$ 30,000

Funding Source:
Sewer Reserves

Impact on Operating Budget:
There will be no additional impact on the 2011 operating budget.



West Side Well Treatment for Manganese

Funds are being appropriated in 2011 to install a treatment facility at the existing Westside Well site.

Water Fund (401)

Construction	\$ <u>100,000</u>
Total 2011 Costs	\$ 100,000

Funding Source:
Water Reserves

Impact on Operating Budget:
Beginning in 2011, this project is projected to increase operating budgets by \$5,000 annually.

Intrusion Alarms

Funds are being appropriated in 2011 to install intrusion alarms at several facility sites.

Water Fund (401)

Construction	\$ <u>22,000</u>
Total 2011 Costs	\$ 22,000

Funding Source:
Water Reserves

Impact on Operating Budget:
There will be no additional impact on the 2011 operating budget.

Big Valley Well Piping Improvements

Funds are being appropriated in 2011 to improve the water supply piping at the well site to allow both wells to produce as designed without reduction in capacity.

Water Fund (401)

Planning & Design	\$ <u>15,000</u>
Total 2011 Costs	\$ 15,000

Funding Source:
Water Reserves

Impact on Operating Budget:
There will be no additional impact on the 2011 operating budget.

Pugh Well/Lincoln Treatment for Manganese

Funds are being appropriated in 2011 to install a treatment facility at the new well (Pugh/Lincoln #2).

Water Fund (401)

Construction	\$ <u>100,000</u>
Total 2011 Costs	\$ 100,000

Funding Source:
Water Reserves

Impact on Operating Budget:
Beginning in 2012, this project is projected to increase operating budgets by \$5,000 annually.

Big Valley – Little Valley Transmission Line

Funds are being appropriated in 2011 to replace the transmission main between Big Valley Road/Bond Road and the Big Valley wells.

Water Fund (Fund 401)

Planning & Design	\$	200,000
Total 2011 Costs	\$	200,000

Funding Source:
Water Reserves

Impact on Operating Budget:
There will be no additional impact on the 2011 operating budget.

Emergency Fjord Drive Bank Repair

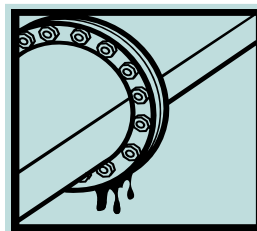
Funds are being appropriated in 2011 to stabilize the bank. This funding represents the water utility contribution to the Fjord Drive Bank repair project.

Water Fund (Fund 401)

Construction	\$	25,000
Management		5,000
Total 2011 Costs	\$	30,000

Funding Source:
Water Reserves

Impact on Operating Budget:
There will be no additional impact on the 2011 operating budget.



Dogfish Creek Restoration

Funds are being appropriated in 2011 to begin projects identified in the Master plan designed to restore Dogfish Creek.

Storm Drain Fund (410)

Planning & Design	\$	50,000
Total 2011 Costs	\$	50,000

Funding Source:
Storm Drain Reserves

Impact on Operating Budget:
There will be no additional impact on the 2011 operating budget.

Anderson Parkway LID Retrofit

Funds are being appropriated in 2011 to construct rain gardens at several locations, pedestrian walkways, pervious pavement infiltration strips, as well as repair and seal the deteriorated 1.5 acres asphalt parking surface.

Storm Drain Fund (410)

Planning & Design	\$	311,000
Management		10,000
Total 2011 Costs	\$	321,000

Funding Source:
Storm Drain Reserves

Impact on Operating Budget:
Beginning in 2012, this project is projected to increase operating expenses by \$2,000 per year.

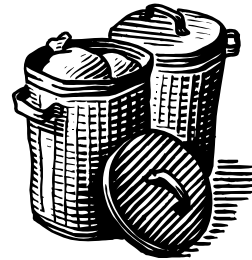
Replace Storm Drains in Ridgewood

Funds are being appropriated in 2011 to identify the necessary improvements to bring the existing stormwater system into compliance with Department of Ecology.

<i>Storm Drain (410)</i>		
Planning & Design	\$	40,000
Total 2011 Costs	\$	40,000

Funding Source:
Storm Drain Reserves

Impact on Operating Budget:
There will be no additional impact on the 2011 operating budget.



Emergency Fjord Drive Bank Repair

Funds are being appropriated in 2011 to stabilize the bank. The project is combining street, water, sewer and storm drain repairs. This funding represents the storm drain utility contribution to the Fjord Drive Bank repair project.

<i>Storm Drain Fund (Fund 410)</i>		
Construction	\$	25,000
Management		5,000
Total 2011 Costs	\$	30,000

Funding Source:
Storm Drain Reserves

Impact on Operating Budget:
There will be no additional impact on the 2011 operating budget.

Solid Waste Transfer Station

Funds are being appropriated in 2011 to install a ramp and associated improvements to the Solid Waste Transfer station.

<i>Solid Waste Fund (404)</i>		
Construction	\$	125,000
Total 2011 Costs	\$	125,000

Funding Source:
Solid Waste Reserves

Impact on Operating Budget:
There will be no additional impact on the 2011 operating budget.